

219 BRYANT STREET



ELMWOOD CROSSING: 219 BRYANT

219 Bryant is the mixed-use centerpiece of Elmwood Crossing, the former Women and Children's Hospital of Buffalo campus, offering over 100,000 square feet of commercial and retail space and 125 residential units. The site boasts ample parking and dedicated spaces are located at the Elmwood Crossing Ramp, a 600-space parking structure, immediately across Hodge Avenue.

Conveniently located in the Elmwood Village, 219 Bryant is 2 miles from Downtown Buffalo and 9 miles from the Buffalo Niagara International Airport.

AT A GLANCE

2

High-Rise Towers

45k

Floorplate Square Footage

+100k

Total Commercial Square Footage

LOCATION

Elmwood Crossing
219 Bryant Street
Buffalo, New York 14209



Ellicott Development
295 Main Street, Suite 700, Buffalo, NY, 14203
716-854-0060
EllicottDevelopment.com

FIRST FLOOR PLAN



SUITE A

1,538 SF

SUITE B

7,653 SF

SUITE C1

7,470 SF

SUITE C2

4,700 SF

SUITE D

7,195 SF

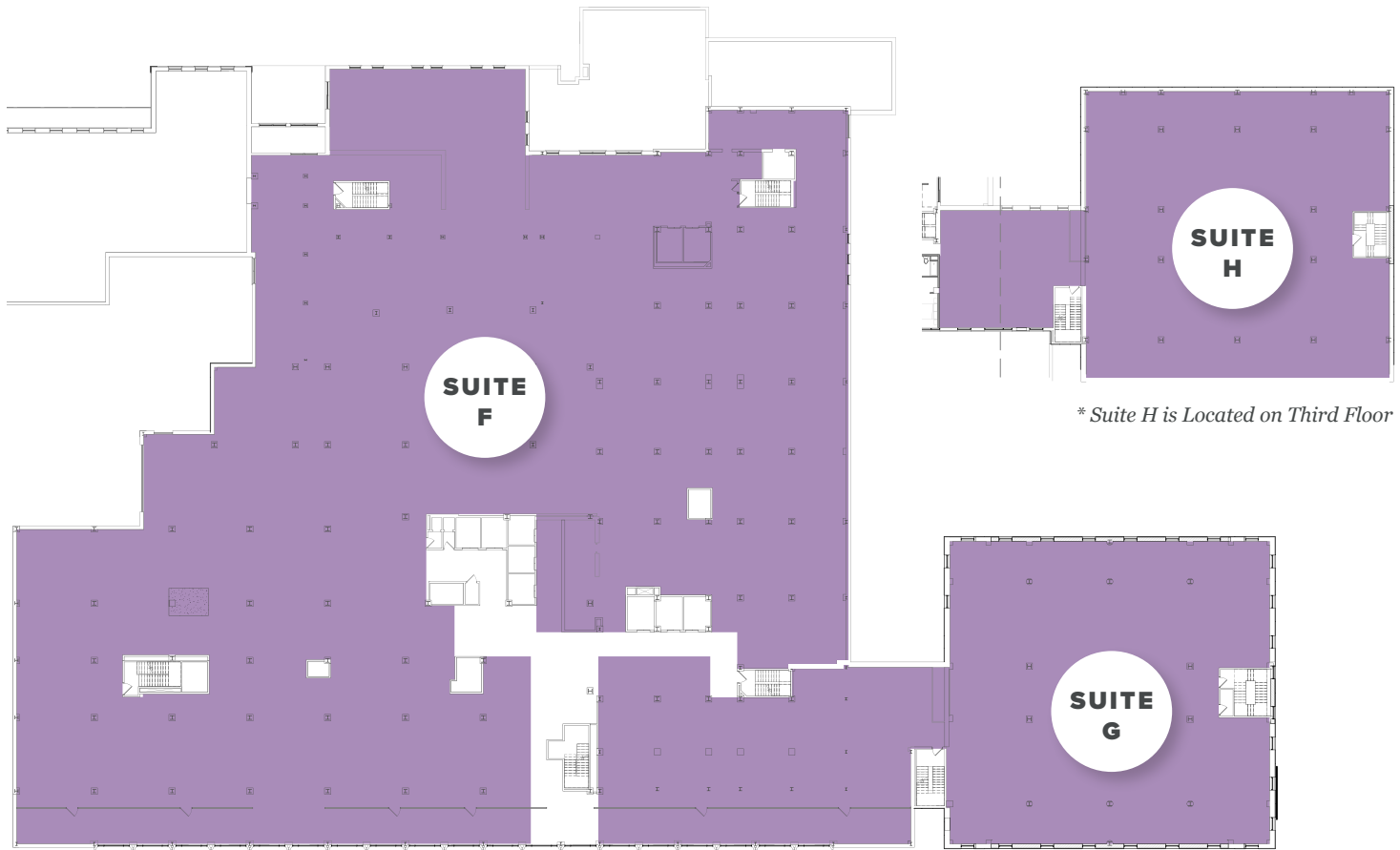
SUITE E

1,756 SF



Ellicott Development
295 Main Street, Suite 700, Buffalo, NY, 14203
716-854-0060
EllicottDevelopment.com

SECOND FLOOR PLAN



* Suite H is Located on Third Floor

SUITE F

42,613 SF

SUITE G

15,042 SF

SUITE H*

11,186 SF