

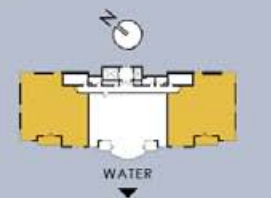
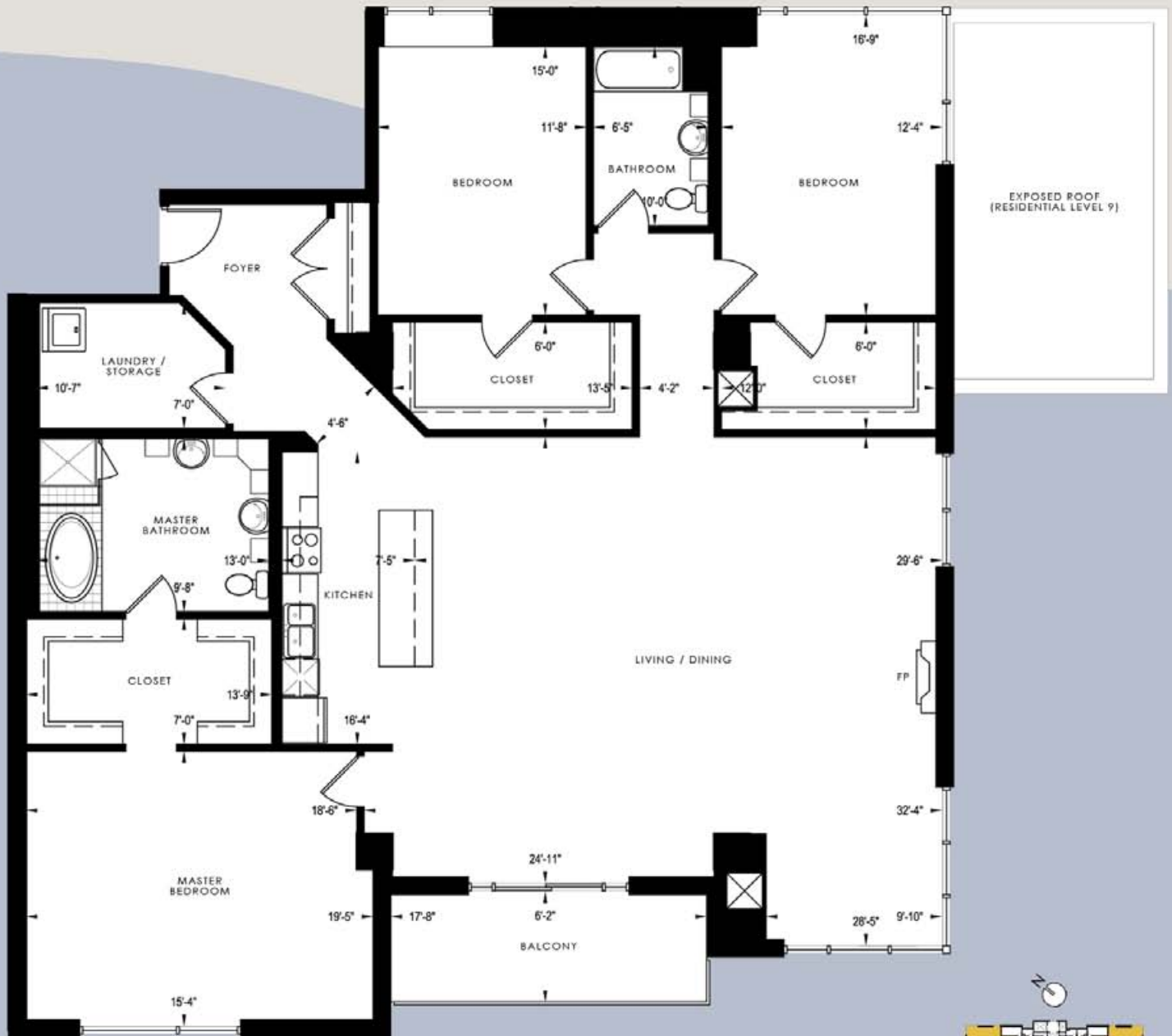


THE PASQUALE WATERFRONT PLACE

THE CAMPOMARINO RESIDENTIAL LEVEL 9 & 10

3 Bedroom, 2 Bath
Living: 2,572 square feet

Campomarino overlooks the Adriatic Sea. It is a city that's been through numerous hardships but always rebuilds itself stronger and better than before. From sunrise to sunset, this home is filled with the history of the past blending with the trends of the future. A life of peaceful serenity and captivating beauty awaits.



Note: Floor Plans are not to scale. Actual usable floor area may vary from the stated floor area. All dimensions are approximate and subject to normal construction variances and tolerances. The Complete offering terms are in an Offering Plan available from Sponsor. File No. CD070334.

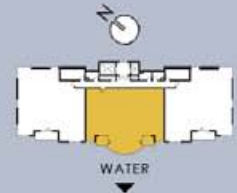


THE PASQUALE WATERFRONT PLACE

THE PORTO ROTONDO RESIDENTIAL LEVEL 9 & 10

3 Bedroom, 2 Bath
Living: 2,622 square feet

The sky blue water of the island makes picture perfect views. Porto Rotondo is home to luxurious beaches, friendly people and exquisite food. A home with cool breeze on hand, life here is relaxed and at ease.



Note: Floor Plans are not to scale. Actual usable floor area may vary from the stated floor area. All dimensions are approximate and subject to normal construction variances and tolerances. The Complete offering terms are in an Offering Plan available from Sponsor. File No. CD070334.