



THE PASQUALE WATERFRONT PLACE

THE MESSINA RESIDENTIAL LEVELS 3 - 7

2 Bedroom, 2 Bath
Living: 1,641 square feet

Part of the Straight of Messina, this seaside city is situated on a beautiful hilly coastline. The strait's rocks, currents, and whirlpools may have been the inspiration for many historical legends. Its colorful history and captivating beauty come together to create a home like no other.



Note: Floor Plans are not to scale. Actual usable floor area may vary from the stated floor area. All dimensions are approximate and subject to normal construction variances and tolerances. The Complete offering terms are in an Offering Plan available from Sponsor. File No. CD070334.

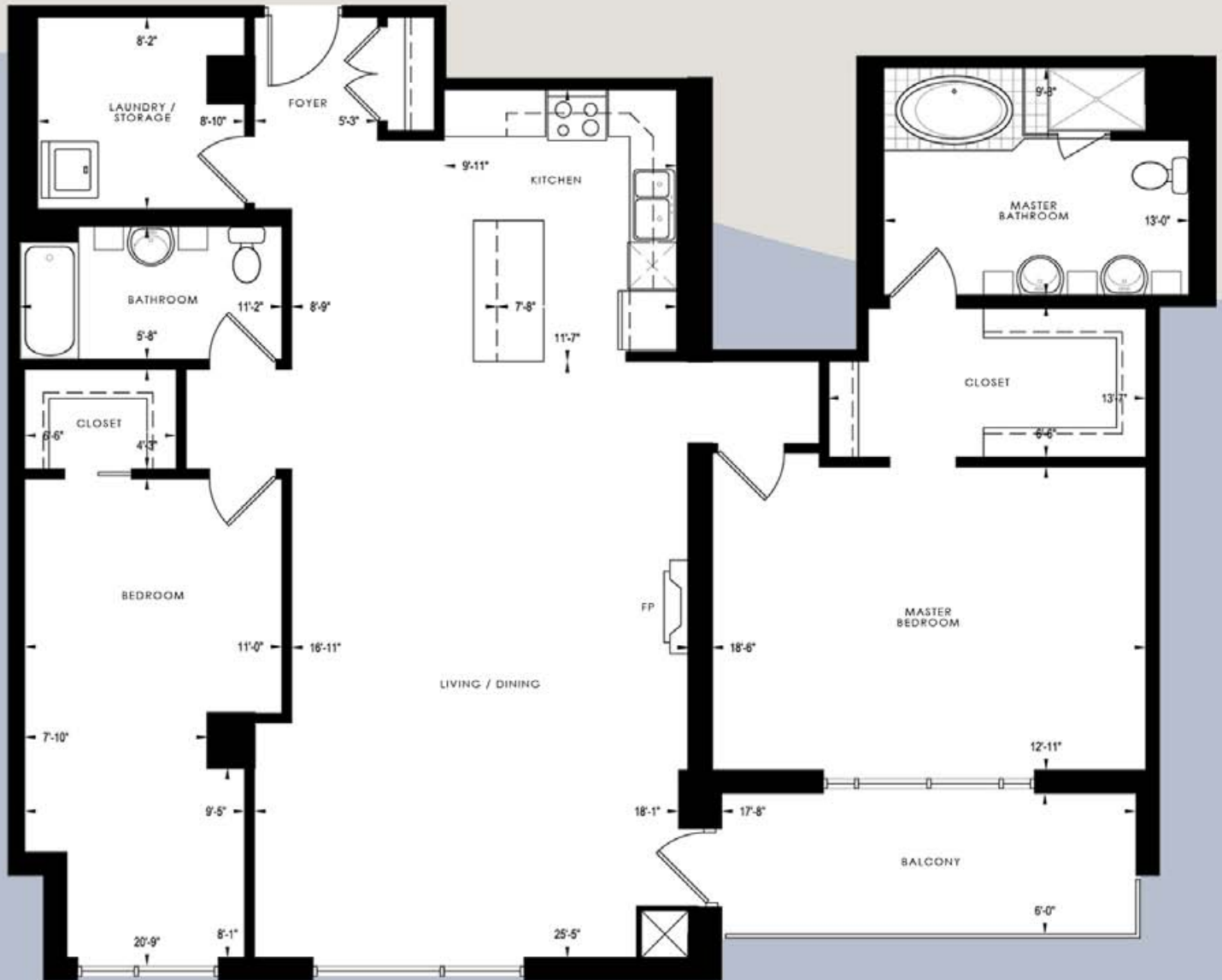


THE PASQUALE WATERFRONT PLACE

THE CALABRIA RESIDENTIAL LEVELS 3 - 7

2 Bedroom, 2 Bath
Living: 1,715 square feet

"The Toe of Italy" - Calabria is the heart of the Mezzogiorno, which stands for the baking sunshine in which the region basks. It is characterized by rugged mountains, small villages, untouched sandy beaches and sapphire blue seas. The contrasts and purity of the landscape make a home to create new adventures and new memories.



Note: Floor Plans are not to scale. Actual usable floor area may vary from the stated floor area. All dimensions are approximate and subject to normal construction variances and tolerances. The Complete offering terms are in an Offering Plan available from Sponsor. File No. CD070334.

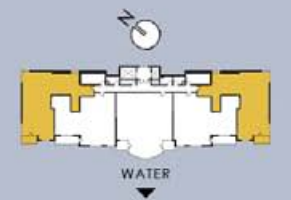
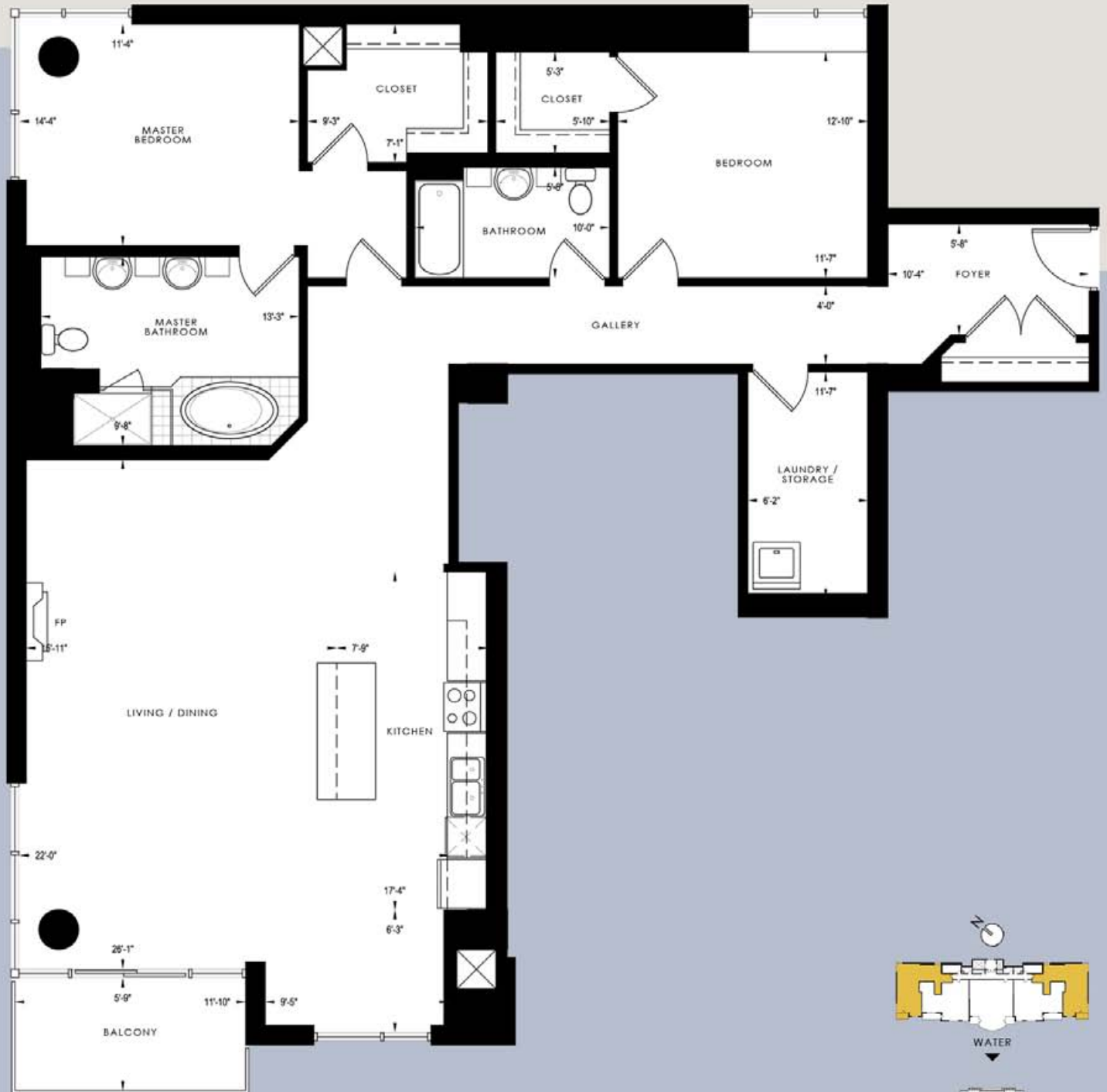


THE PASQUALE WATERFRONT PLACE

THE MURANO RESIDENTIAL LEVELS 3 - 7

2 Bedroom, 2 Bath
Living: 1,844 square feet

The city of Murano is a picturesque island in the Venetian Lagoon known for its glassmaking. Taking a moment to enjoy your surroundings, a feeling of elation and paradise would surely arise. Delicacy, creativity and history blend together to make a captivating piece of artwork that you can call home.



Note: Floor Plans are not to scale. Actual usable floor area may vary from the stated floor area. All dimensions are approximate and subject to normal construction variances and tolerances. The Complete offering terms are in an Offering Plan available from Sponsor. File No. CD070334.



THE PASQUALE

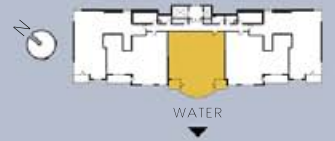
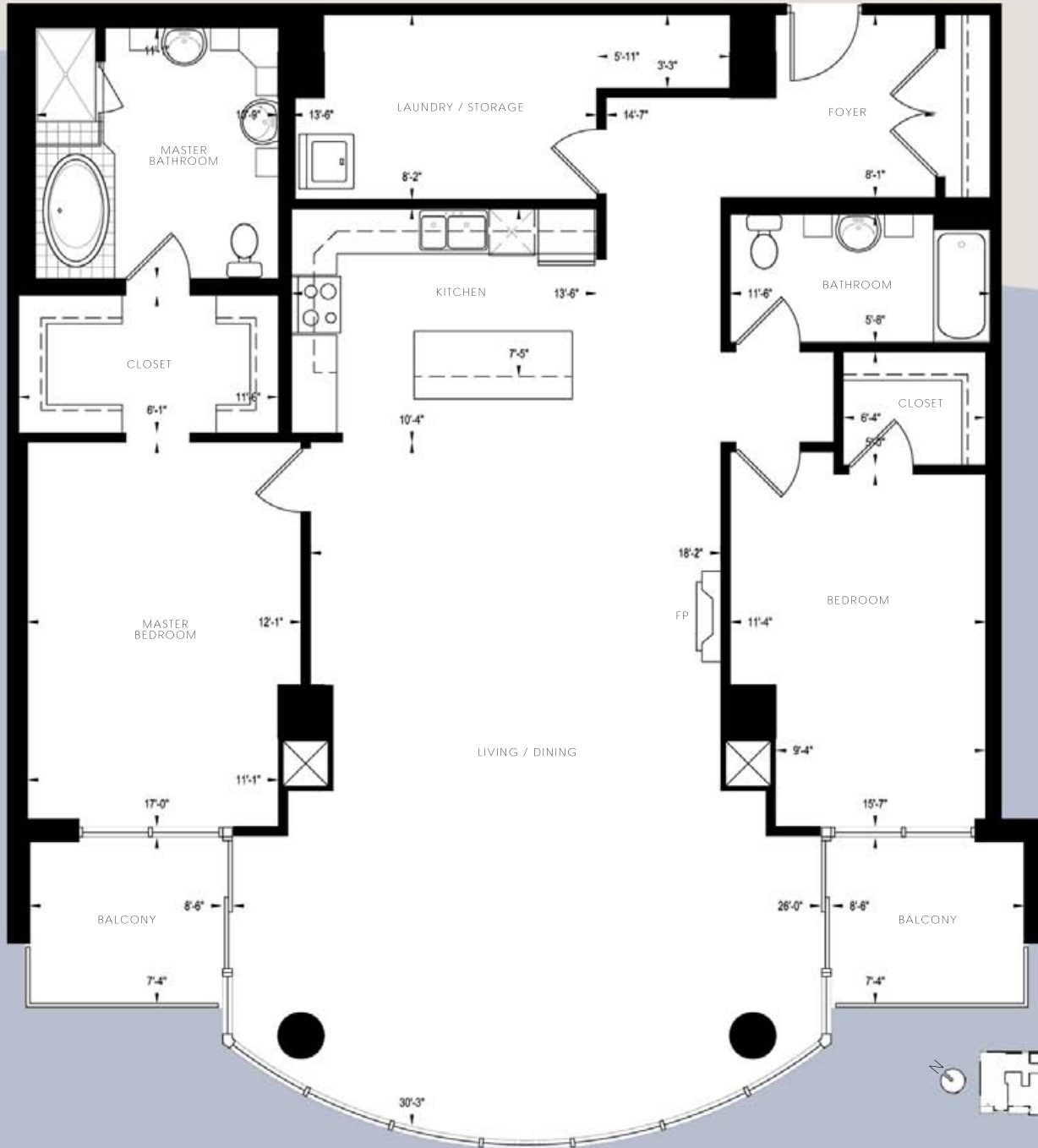
WATERFRONT PLACE

THE UMBRIA

RESIDENTIAL LEVELS 3 - 7

2 Bedroom, 2 Bath
Living: 1,939 square feet

Umbria, the heart of Italy, is world famous for it's jazz. Its rich arts and culture blend together with the essence and flavors of the city to create a comfortable setting of tradition. Discover a home that is filled with the magic of Umbria.



Note: Floor Plans are not to scale. Actual usable floor area may vary from the stated floor area. All dimensions are approximate and subject to normal construction variances and tolerances. The Complete offering terms are in an Offering Plan available from Sponsor. File No. CD070334.