



# THE PASQUALE WATERFRONT PLACE

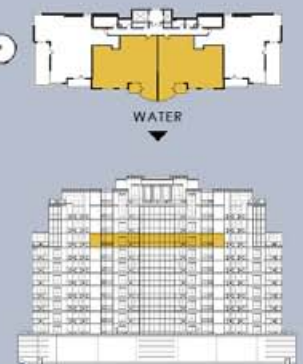
## THE MILANO RESIDENTIAL LEVEL 8

2 Bedroom, 2 Bath  
Living: 1,968 square feet

"A city that is always one step ahead." Milan is known as the world capital of design and fashion. The energy of the city often hides its rich artistic, cultural and historical heritage. This is a home on the cutting edge of design and architectural jewels that are incorporated within a pleasure-seeking atmosphere.



**Note:** Floor Plans are not to scale. Actual usable floor area may vary from the stated floor area. All dimensions are approximate and subject to normal construction variances and tolerances. The Complete offering terms are in an Offering Plan available from Sponsor. File No. CD070334.



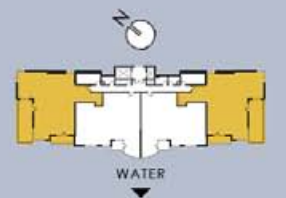
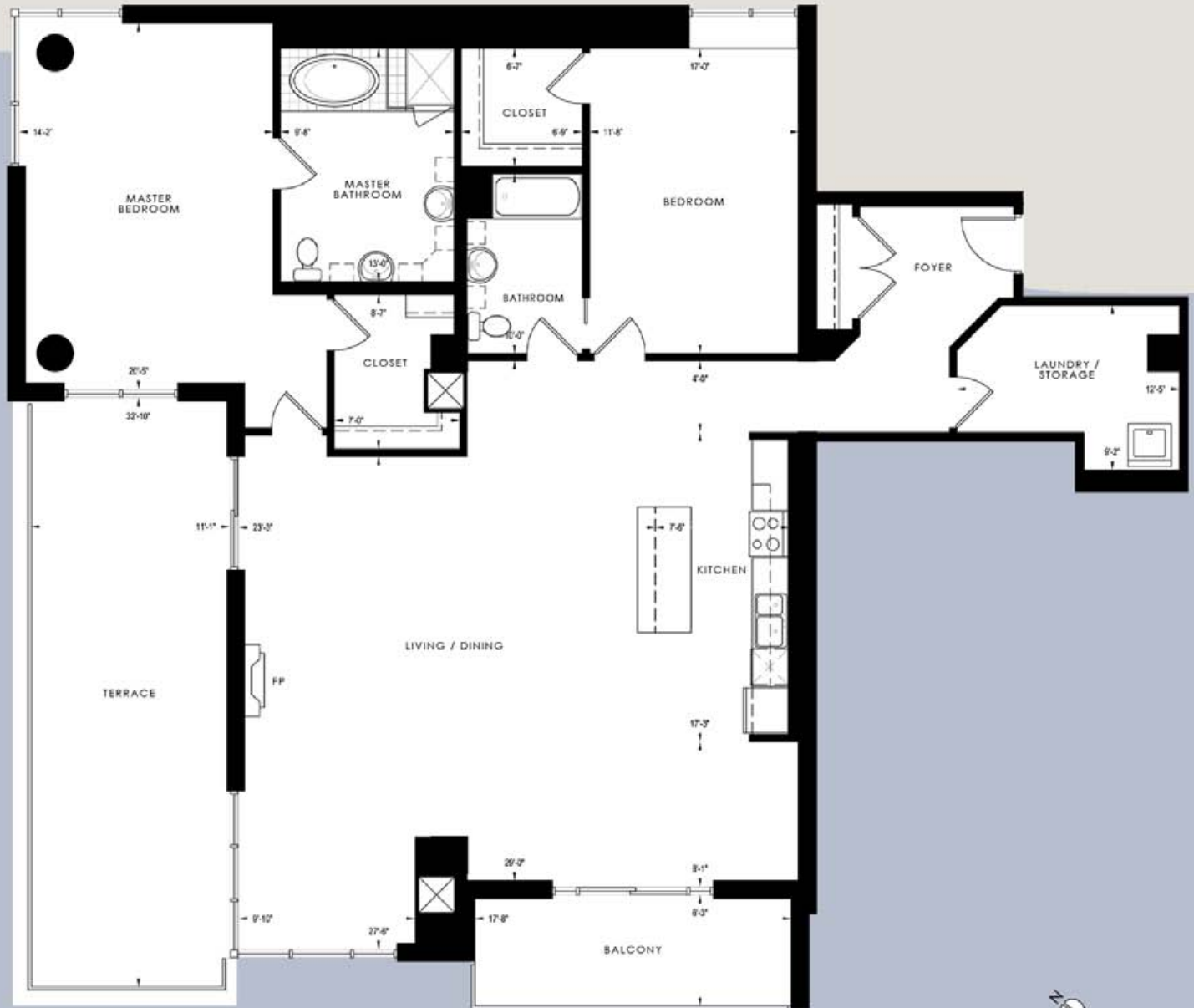


# THE PASQUALE WATERFRONT PLACE

## THE VENEZIA RESIDENTIAL LEVEL 8

2 Bedroom, 2 Bath  
Living: 2,185 square feet

"The City of Water" – The city stretches across numerous small islands making the use of water travel essential. The breathtaking beauty of the city can hardly be described by words. The real charm of it is taking your time and enjoying the little things that make this home so unique.



**Note:** Floor Plans are not to scale. Actual usable floor area may vary from the stated floor area. All dimensions are approximate and subject to normal construction variances and tolerances. The Complete offering terms are in an Offering Plan available from Sponsor. File No. CD070334.